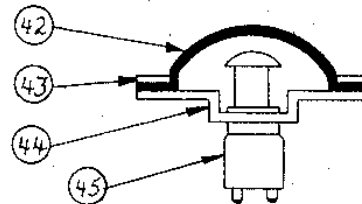
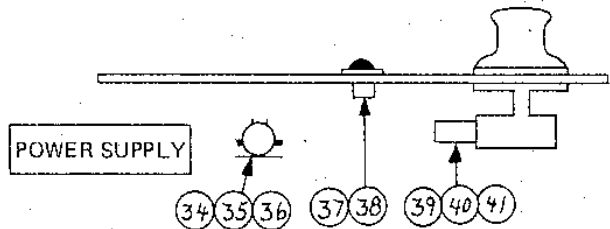
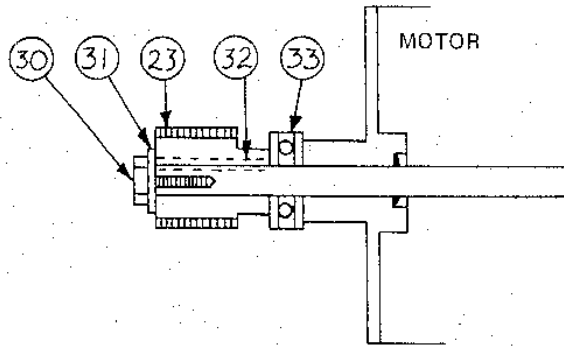


MODEL ACW
500 LB. CAPACITY

IDEAL WINDLASS CO.
P.O. Box 430
East Greenwich, RI 02818

OIL LEVEL

#	QT.	PART NO.	DESCRIPTION
1	1	ACW-2	CAPSTAN WRENCH
2	1	CS-10	CAPSTAN SCREW
3	1	CW-10	CAPSTAN WASHER
4	1	ACW-3	CAPSTAN CAP
5	1	ACW-4	CAPSTAN
6	1	CK-50	CAPSTAN KEY
7	1	G-4	FRICTION DISC
8	1	C2HW-7	WILDCAT
9	1	CHWSO-3	FRICTION PLATE
10	4	DB-50	DECK BOLTS
11	1	A-4	DECK PLATE
12	4	NU-50	NUTS
13	8	FA-51	SCREWS
14	1	A-3	INSPECTION COVER
15	1	A-30	COVER GASKET
16	1	A-1	GEAR CASE
17	1	WK-50	WORM KEY
18	1	SS-51	SET SCREWS
19	1	EX-50	EXPANSION PLUG
20	2	BU-50	BUSHING
21	2	SS-35	SET SCREWS
22	1	A-5	MAIN GEAR
23	1	A-20	MOTOR WORM
24	1	GT-11	THRUST BEARING
25	1	OP-50	OIL PLUG
26	1	ACW-5	MAIN SHAFT
27	1	DP-51	DRIVE PIN
28	1	ADX-50	CHAIN STRIPPER
29	2	FA-55	BOLTS
30	1	FA-52	HEX BOLTS
31	1	FA-53	WASHER
32	1	WK-51	MOTOR WORM KEY
33	1	GT-3	THRUST BEARING
34	1	SO-12	SOLENOID - 12 VOLT
35	1	SO-32	SOLENOID - 32 VOLT
36	1	CON-115	CONTROL BOX 115v A/C
37	1	FSB	FOOTSWITCH-12, 24, 32 V
38	1	FSC	FOOTSWITCH 115v A/C
39	1	MM-500-12	MOTOR - 12 VOLT
40	1	MM-500-32	MOTOR - 32 VOLT
41	1	MM-500-115	MOTOR - 115 VOLT A/C
42	1	FSA-1	RUBBER COVER



TO REMOVE MAIN SHAFT:

1. Remove windlass from boat.
 - a. Remove the above deck parts.
 - b. Remove drive pin PC #27.
 - c. Remove bolts PC #10.
 - d. Drop the gear case through the deck.
2. Remove Inspection Cover PC #14.
3. Loosen the set screws PC #21 and 18.
4. Using a block of wood to protect the top of the shaft, drive the shaft down through the bottom.
5. This will push the bushing PC #20 out the bottom of the gear case. Continue until PC #17 is visible.
6. Remove PC #17 and then pull the main shaft up through the top.

Parts are available through your local distributor or through
IDEAL WINDLASS CO.,
 P.O. Box 430 East Greenwich, RI 02818 Tel. 401-884-2550

#	QT.	PART NO.	DESCRIPTION
43	1	FSA-3	MOUNTING RING
44	1	FSA-2	MOUNTING PLATE
45	1	ELM-DC	ELEMENT
		ELM-DC	